



# Wisconsin PRAMS

## Pregnancy Risk Assessment Monitoring System

PRAMS Quarterly Newsletter

Fall 2017

### Highlights

Wisconsin PRAMS **2014 data** are available for analysis. See "How to request PRAMS data" on page 2 for more information! We hope to have the **2015 research file** available soon.

The **newly designed PRAMS materials** debuted with August data collection, including the new survey cover and calendar insert. See page 2 for more information and stay tuned for future updates!

### Looking Ahead

The **PRAMS Advisory Committee Meeting** will be a webinar held late fall/early winter. Please look out for a formal meeting invitation soon!

Wisconsin PRAMS expects to receive our **Zika virus supplement dataset** from CDC late fall/early winter 2017. We can't wait to share the results with you!

Every year Wisconsin PRAMS must complete a **continuing application** for our CDC grant. The team will submit the year three funding application in January 2018!

### Fall 2017 PRAMS Newsletter

The PRAMS team at the Wisconsin Department of Health Services provides quarterly newsletters to continuously engage the PRAMS Advisory Board and other agencies and organizations invested in maternal and infant health outcomes in Wisconsin.

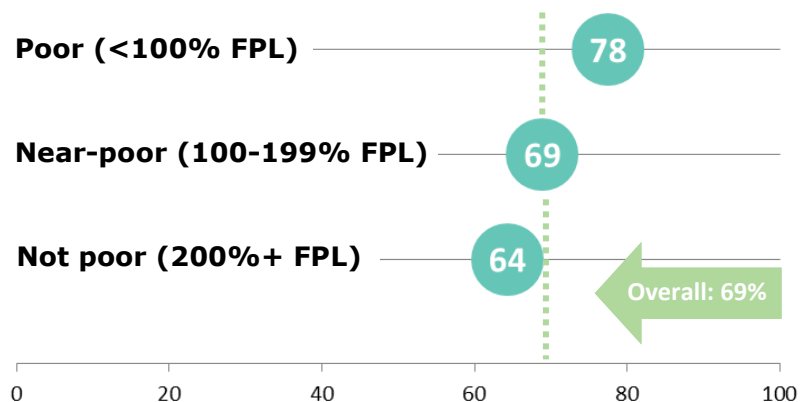
If there is any specific content you would like to see in future newsletters, please contact the Wisconsin PRAMS team at [dhsdphprams@wi.gov](mailto:dhsdphprams@wi.gov).

### Featured Data

Wisconsin PRAMS asks mothers a variety of questions about prepregnancy and postpregnancy contraception use. Postpartum contraception use is important interconception care because short interpregnancy intervals are associated with poorer birth outcomes. Here are some key data points from 2012-2014 PRAMS about postpartum contraception use and income:

- About **82% of women** report doing something to prevent pregnancy after giving birth to their most recent baby.
- Of sexually active mothers who report doing something to prevent pregnancy after the birth of their most recent baby, about **69% of these women** are using a most or moderately effective method of contraception.
- There are significant **differences by income** when it comes to using a most or moderately effective method of contraception.

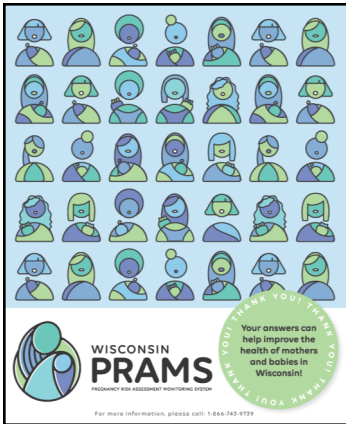
**Mothers living under 100% of the federal poverty level are significantly more likely than mothers living at or above 200% of the federal poverty level to be using a most or moderately effective method of contraception.**



# PRAMS Project Updates

## Launching the new PRAMS design!

Wisconsin PRAMS spent the beginning of 2017 working to modernize project materials to more broadly engage with all mothers. The Wisconsin PRAMS team is pleased to announce that the new survey cover and updated calendar insert (see below) launched with August data collection!



The Wisconsin PRAMS team will be working on updating all materials to align with the new branding design, such as the PRAMS website and the resource list included in the mailing packet sent to moms with the survey.



During the development process, it was important to the team to evoke a sense of inclusiveness and community. We are very excited to share this latest development with you all!

## Bringing Data to Action

The Wisconsin PRAMS team is always looking for opportunities to bring data to action. The survey collects data on a wide variety of topics including: breastfeeding, safe sleep practices, tobacco and alcohol use, stress, social support, and maternity leave.

PRAMS data have been used to update Medicaid policy related to folic acid-containing vitamins, inform the Healthy Smiles for Mom and Baby initiative, and provide baseline and evaluative data for the Lifecourse Initiative for Healthy Families, to name a few.

If your program is interested in using PRAMS data, please see the sidebar for information on how to request aggregate data, presentations, and access to the research file.

Please email the Wisconsin PRAMS team if you would be interested in helping bring PRAMS data to action! We'd be more than happy to work with you and your program.



## How to request PRAMS data

If you would like to request **aggregate data or a presentation** on one of the many topics on which PRAMS collects information, please send an email to the PRAMS team with the details of your request. Aggregate data requests may require Division of Public Health Data Governance Board approval.

If you would like to **access the PRAMS research file** for your own analysis using appropriate statistical software, please email the PRAMS team to request an application.

Your completed application will be reviewed by the Division of Public Health Data Governance Board. Upon approval, a Data Use Agreement will be drafted granting you access to PRAMS data for your stated purpose.

If you have any questions about what type of data request would be appropriate based on your research question, email Wisconsin PRAMS and someone from the team will get back to you!



## Wisconsin PRAMS Team

Questions or comments? Please send to: [dhsdphprams@wi.gov](mailto:dhsdphprams@wi.gov)

**Fiona Weeks** | PRAMS Project Director

**Christopher Huard** | PRAMS Data Manager

**Angela Rohan** | Senior MCH Epidemiologist and CDC Assignee to Wisconsin

**Stephanie Hartwig** | PRAMS Oversample Research Specialist



## Acknowledgments

Funding for PRAMS is provided by the Cooperative Agreement 1U01DP006229-01 from the **U.S. Centers for Disease Control and Prevention (CDC)**.

Additional support is provided by the **Title V Maternal and Child Health Block Grant Program**.

The **Wisconsin Partnership Program**, University of Wisconsin School of Medicine and Public Health, provides invaluable support for PRAMS by funding an oversample of non-Hispanic black mothers in key counties with community collaboratives supported by the **UW Lifecourse Initiative for Healthy Families**.